



BREATHING NEW LIFE INTO RESPIRATORY MEDICINE: SURVEILLANCE AND PUBLIC HEALTH IMPLICATIONS

Vasanthabharathi Venkataraman*, Kalaiselvi Vaithi** & Indira Kalyanasundaram***

* Atham Organics, Chidambaram, Tamil Nadu, India

** Bharathi Women's Arts & Science College, Kallakurichi, Tamil Nadu, India

Apollo Arts and Science College, North Chennai, Tamil Nadu, India

Cite This Article: Vasanthabharathi Venkataraman, Kalaiselvi Vaithi & Indira Kalyanasundaram, "Breathing New Life into Respiratory Medicine: Surveillance and Public Health Implications", *International Journal of Scientific Research and Modern Education*, Volume 10, Issue 1, January - June, Page Number 71-78, 2025.

Copy Right: © R&D Modern Research Publication, 2025 (All Rights Reserved). This is an Open Access Article distributed under the Creative Commons Attribution License, which permits unrestricted use, distribution, and reproduction in any medium, provided the original work is properly cited.

Abstract:

Annually, lower respiratory tract infections (LRTIs) cause about 2.3 million mortality and 6.6 million morbidity in children under the age of five around the globe (Wildman et al., 2023). Globally, these infections are common in children below five and are growing, especially in deprived regions (Safari et al., 2023). A number of microbes cause LRTIs, which includes bacteria, fungi, and respiratory tract infectious viruses. Globally, major viral pathogens, including influenza virus, coronavirus, adenovirus, and rhinovirus cause severity in children. However, the pandemic notably diminished the prevalence of non-COVID-19 respiratory viruses, with a 90% decrease in victims excluding adenovirus and enterovirus were recorded (Ho et al., 2023).

The respiratory epithelium contains a diversified associated microbiota but respiratory microbial research and findings were very less because of the complicated unculturable microbiome of the respiratory system (Dickson et al., 2015; Santacroce et al., 2020). Significant progress is being made in developing host response-based diagnostics for Acute respiratory infections (ARI). One of the major developments is protein biomarkers and "omics" methods including proteomics, metabolomics, and transcriptomics technology (Ross et al., 2019; Wildman et al., 2023).

Global and National programs against lower respiratory infections and other common diseases, such as Every Breath Counts, the Global Action Plan for Pneumonia and Diarrhoea (GAPPD), and the Stop Pneumonia Initiative, are being implemented (Rudan et al., 2013). This review provides an overview of the global, regional, and national impact of LRTIs and explores the role of microbial origins in LRTIs.

Key Words: Lower Respiratory Tract Infections, Microbiome, "Omics" Approach, Global Initiatives.

1. Introduction:

Growing population and 21st-century lifestyles have enabled a wide spectrum of diseases to threaten human life across boundaries. Respiratory disorders were most ubiquitous in huge populations of middle- and low-income countries. Although common, respiratory disorders are typically ignored or undertreated. Human lungs are the only internal organ frequently exposed to a wide range of environmental pollution from natural and anthropogenic sources.

Over the last few years, global climate change has become one of the most important phenomena, which has metamorphic effects on health, economics, ecological community and topography. Direct effects of climate change such as severe droughts and hurricanes can adversely affect lung health. Dust exposure has been linked with Influenza A, pneumonia, pulmonary coccidioidomycosis and meningococcal meningitis.

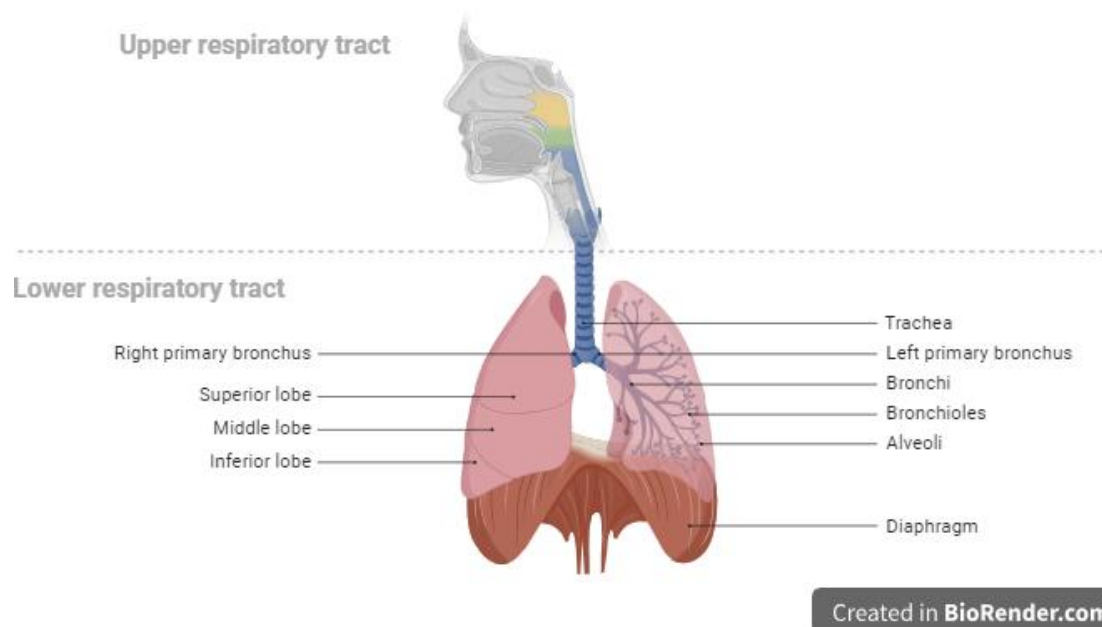


Figure 1: Lower Respiratory System

Research also propound that exposure to air pollutants may worsen viral respiratory infections, with increased hospitalizations for respiratory infections, especially in children. Experimental studies found distinct mechanisms by which air contaminant may increase the vulnerability and intensity of viral respiratory inflammation, including impaired anti-viral immune responses, altered epithelial barrier functions, and increased cell surface receptor expression, all of which promote viral entry into cells (Burbank, 2023).

Lower respiratory infections (LRIs), are a major cause of mortality and morbidity, especially in children under the age of 5 (Soriano et al., 2020). Inflammation caused by Haemophilus influenzae affects between 250,000 and 500,000 people annually. In 2015, about 10.4 million (14%) mortality was detected in globe by Mycobacterium tuberculosis infection (Mehta et al., 2018).

Non fatal diseases such as lung cancer caused by tobacco smoking or inhalation of environmental pollutants were estimated to affect 1.6 million people in each year, with an alarming rise in trend (Shukla et al., 2020). Acute lower respiratory infections (ALRI), which include bacterial and viral pneumonia and bronchiolitis, are the major cause of mortality in infant worldwide, resulting in a most important global prevalence (Choube et al., 2014, Nair et al., 2013). Illustration of the lower respiratory system in figure 1.

2. Global Perspective on Lower Respiratory Infections:

WHO and other organization statistics show that 400 million people worldwide affected from mild to moderate asthma and COPD. Physicians typically diagnose ALRI (Acute respiratory tract infection) based on serious respiratory symptoms, including acute-onset cough or difficulty in breathing (Nair et al. 2010).

A correlation investigation was executed on LRTI mortality rates and Gross Domestic Product (GDP) per capita, together with the Health Access and Quality Index (HAQI), for a total of 15 countries in East and Southeast Asia. The findings exhibit a significant dwindle in mortality due to lower respiratory tract infections (LRTIs) in overall populations of countries with lower-middle-income (LMI). However, there has been observed increased LRTI mortality in countries with upper-middle-income (UMI) and high-income (HI) (Feddemma et al., 2021). About 70% of ALRI cases occur in South Asia and sub-Saharan Africa, and 97% of all cases arise in low- and middle-income countries (UNICEF, 2016). About 5.8 million people faded from ALRIs around the world in 2010 (Chen et al., 2014), and about half of those deaths happened in sub-Saharan Africa (UNICEF, 2016). About four million of the fifteen million mortality of children under five that happen every year around the globe are caused by ALRIs (Harerimana et al., 2016).

3. Effects of Lower Respiratory Diseases Across Various Regions of India:

India has a population of 1.3 billion people who live in states with distinct geographical and cultural characteristics and various agro-climatic areas. According to NFHS-4 (2015-16), ARI prevalence is lowest in Sikkim (0.3%), highest in Meghalaya (5.8%) and above the national average of 2.7% in Chandigarh, Haryana, Puducherry, Tamil Nadu, Jammu and Kashmir, Punjab, Utrakkhand, Uttar Pradesh, Jharkhand, and West Bengal. Fifth (2019-21) NFHS (NFHS-4: 2.73%, NFHS-5: 2.79%) remains an issue of public health. (Safiri et al., 2023).

Goel et al., (2012) found that 67.1% of children under five in Meerut, north India, had ARI. 26.8% in Lucknow, 27.7 percent in Moradabad, 62.2% in rural Kancheepuram, and 53.7% in rural Puducherry (Arun et al., 2014, Sharma et al., 2013). About eight states having the most SARS-CoV-2 infections in India are Maharashtra (3.84 million), Karnataka, Andhra Pradesh, Tamil Nadu, Kerala, Delhi, Uttar Pradesh, and West Bengal. Ecological factors, dietary patterns, and social practices affects the respiratory and causes infection distribution in diverse ways and intensities (Salvi et al., 2018).

4. Lower Respiratory Pathogen Prevalence in Pre and Post COVID-19 Periods:

COVID-19 pandemic has had a significant effect on public health across the world. Due to the fact that the clinical and epidemiological feature of COVID-19 are very similar to those of other respiratory viruses that affect children, it is of the greatest importance to ensure that different viral respiratory infections are controlled in the most efficient way feasible. The safeguard measures that were taken to prevent COVID-19 emerge to have had an indirect influence on the seasonal changes of viral infections as well as the frequency of viruses that are directly relevant to the scenario. Although the link between coinfection and dreadful severity is not entirely clear, reports of dual or even triple infections with multiple combinations of respiratory viruses such as influenza, SARS-COV-2, RSV, HMPV, adenovirus, rhinovirus, and parainfluenza have been made. Especially in patients with co-morbidities, immunocompromised status, the elderly, and pediatric patients, coinfections may change the disease severity and epidemiology, impacting the risks of outcomes like hospitalization, intensive care unit admission, mechanical ventilation, and mortality (Ho et al. 2023). Because antivirals are only effective against a subset of respiratory viruses, and because treating one virus might have adverse impacts on the virulence of the other, treating viral co-infections can be a difficult and complex process (Alaib et al., 2023).

Immense effects of the COVID-19 pandemic, many people considered high risk for extreme complications and mortality from COVID-19 also endured the psychological stress caused by pandemic concerns, which resulted in depression, insomnia, and posttraumatic stress disorder (WHO, 2021). According to the report of National Health Portal of India, there were 41,996,260 cases and 3,740 fatalities from respiratory diseases in India in 2018. Acute respiratory infections (ARI) accounted for 69% of all communicable disease cases until to the outbreak of the severe acute respiratory syndrome coronavirus 2 (SARS-CoV-2). Following the coronavirus disease 2019 (COVID-19) pandemic, the overall number of infected people reached millions.

5. The Influence of Microbial Origins on Lower Respiratory Tract Infections:

Nearly one-fifth of mortality in children under the age of five is attributable to infections, with pneumonia nearly about 90% of ALRI victim. Lower respiratory infections (LRIs), which are preponderantly caused by viruses and bacteria including Haemophilus influenzae type b and Streptococcus pneumoniae the remaining 10 to 15% are caused by Legionella spp., Mycoplasma pneumoniae, Chlamydia pneumoniae. Legionella pneumophila is the most important atypical agent for patients with impaired T-lymphocyte function, and it may be either community or hospital-acquired (Cunha, 2001 Gasink and Blumberg 2001). The respiratory system is persistently exposed to environmental fungal which affects the sinonasal mucus even in healthy person (Ponikau et al., 1999; Buzina et al., 2003). Common pathogenic fungus causing upper and lower airway illness include Aspergillus species, Legionella spp., Mycoplasma pneumoniae, Chlamydia pneumoniae and L. pneumophila are the most

critical atypical microbes, which can be incidental in the community or clinic and patients with decreased T-lymphocyte function (Braun et al., 2003). Table 1 shows most prevalent lower respiratory tract diseases as well as their causative organisms, symptoms, and patient age groups. A few of the most prevalent diseases that impact the lower respiratory tract were illustrated in figure 2.

Table 1: An Overview of Lower Respiratory Infections

LRI	Etiology	Clinical Manifestations	Age Group of Patients
Lung Infection	Aspergillus sp and Cryptococcus sp	Tight chest, high fever, sneezing	children up to 5 years
Influenza	Haemophilus influenzae	High fever, Body aches, stuffy nose	Kids upto age of five
COVID-19	SARS CoV-19	High fever, Breathing difficulties, Cough	Healthy adults between the ages of 15 and 75
RSV	Respiratory syncytial virus	Shortness of breath, high fever, bluish tint to your skin, wheezing and worsening cough	Children upto 2 years
Bronchitis	S. pneumoniae	Chest discomfort, Fever, Wheezing	infants under 2 years of age
Pneumonia	M. pneumoniae, Chlamydia spp, Legionella, C. burnetii, S. aureus, K. pneumoniae and viruses	cough, fever, chest pain, tachypnea and sputum production	Infant at age of 3 to 5 years
nosocomial pneumonias	P. aeruginosa, E. coli, Enterobacter, Proteus sp	Headache, confusion, abdominal pain, nausea, vomiting and diarrhea	Infant age of 19 to 30 years
TB	M. tuberculosis	Cough (sometimes blood-tinged), weight loss, night sweats, fever, chest pain, and fatigue	Adolescents older than 10 years of age
Histoplasmosis	Histoplasma Spp	Fever, chills, headache, muscle aches, fatigue, cough and chest discomfort	Median age up to 51 years
Allergic bronchopulmonary aspergillosis	A. fumigatus	hypersensitivity reactions	This affects males aged 28-37 and females aged 17-27.
Aspergillosis	Aspergillus sp	Fungal spores trigger an allergic reaction and infection spreads to blood vessels	The disease affects all ages.
Pulmonary amebiasis	E. histolytica trophozoites	High Fever, abdominal pain, lung abscess, hepatobronchial fistula	Infant at age of 3 to 5 years
Pulmonary leishmaniasis	L. donovan	Pneumonitis, pleural effusion	Infant at age of 3 to 5 years

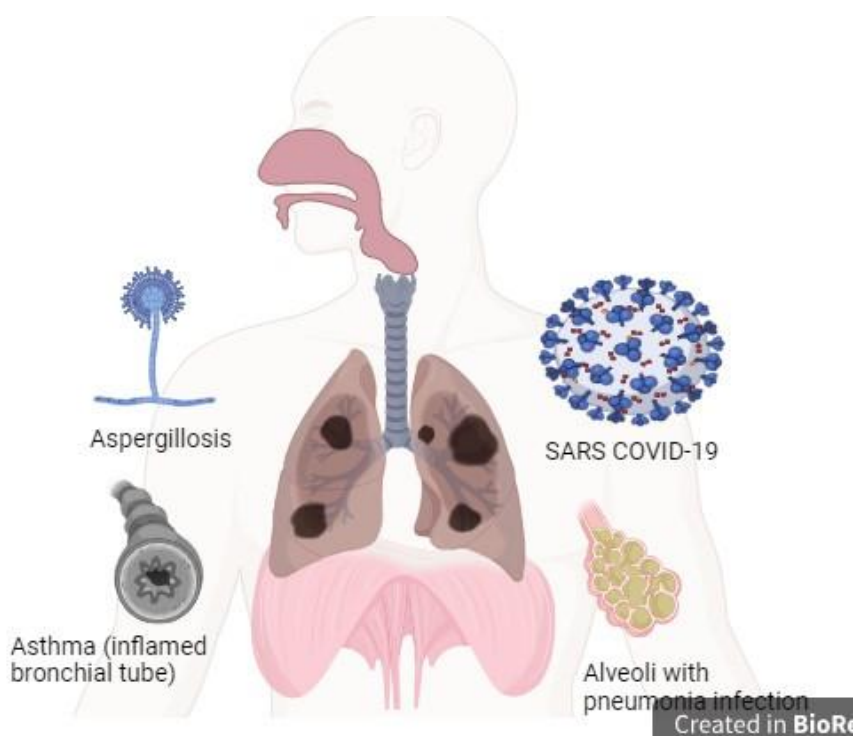


Figure 2: A Handful of Significant Lower Respiratory Illnesses

6. Profiling Pathogens Through Proteomics and Metabolomics:

Metabolomics is "the analysis of the whole metabolome under a given set of physiological, environmental or clinical conditions" (Fiehn,2001). Metabolite profiling (Wheelock et al.,2013) facilitates metabolic pathway analysis and clarifies organic system interactions by targeting a specific collection of metabolites (Zhang et al., 2021). Metabolomics is a more systematic study of cellular biochemical signatures, while proteomics studies proteins and their production. MS is a sensitive adequate method to define and quantify biological sample metabolites (Kaddurah et al., 2008). Pharmacologic separation methods like GC, LC, or CE can be used with MS detection. Thus, analytical methods like LC-MS, GC-MS, CE-MS, and MALDI-MS may increase metabolome exposure (Konig,2011). Clinical laboratories frequently evaluate with MS (Tenori et al.,2012).

Metabolomics has been used to diagnose pediatric pneumonia. Laiakis et al(2010) analyzed the pneumonia-afflicted children's urine and plasma to healthy controls. Uric acid levels in pneumonia patients' urine samples were lower but higher in plasma samples. Urinary uric acid levels in infants were lessor due to severe renal reabsorption in intensified pneumonia.. Respiratory syncytial (sin-SISH-uhl) virus replication induce the widespread alterations in the cellular proteome and altered epigenetic regulatory complexes associated with the innate response. Fujiogi et al. (2020 and 2021) addressed the link between acute respiratory virus infection and asthma development. Zhang et al. (2021) and Dapat & Oshitani (2001) proved the complex cellular protein and metabolite patterns in respiratory syncytial virus (RSV) pathogens. proteomics showed that RSV infection is linked to glycolysis and may be treated by targeting this pathway (Yin, et al.,2021)

However, nucleic-acid-based approaches can diagnose COVID-19 early, it is as important to identify severe individuals before they show symptoms to reduce death. In the study by Shen et al. (2020), a machine learning model can classify severe cases using molecular signatures of metabolites and proteins, based on the expression levels of 22 serum proteins and 7 metabolites. The research revealed protein and metabolite abnormalities in severe COVID-19 patients' sera, which could be used to detect blood biomarkers for severity assessment.

6.1 Microbe-Microbe and Microbe-Host Interactions Studied Using Omics:

The human respiratory tract microbiome (RTM) comprises a diverse group of microbes that lives in multiple kingdoms along the respiratory tract. By protecting against pathogen infection and stimulating the immune system, the RTM contributes to the health of the host .In spite of increasing research on the microbiota and respiratory disease, mechanisms linking microbial community dysbiosis to chronic inflammation remain elusive. Understanding the impact of microbiota composition or function on airway inflammatory diseases like chronic rhinosinusitis, asthma, and cystic fibrosis is essential. Translational microbiome research can guide clinical decisions and novel therapies by integrating multiple omics assays and in vitro and in vivo studies. Understanding the role of the microbiota in chronic airway inflammation will enable the development of therapies that control microbiome composition or activity to treat these diseases(Cope,2018).

Basic observations for understanding that the mucosal microbiota drives inflammatory responses in the individuals to understand patient heterogeneity and develop treatments for microbial and immunological dysfunctions in patient subgroups. Multiple integrated. Omics technologies help to characterize host and microbiome characteristics in overall, chronic samples to proceed from correlation to etiology. This technologies help to characterize host and microbiome characteristics in large, longitudinal cohorts to move from correlation to causation. Chronic lung diseases need dependable biomarkers, emphasizing the necessity for huge data integration. Integrating genomic, proteomic, transcriptomic, and microbiomic datasets can assist risk-stratify patients (Sidhaye et al.,2018).

Multiple omic datasets can bring accurate, positive predictive biomarkers. Multi-omics research has examined whether lower airways can provide diagnostic and prognostic biomarkers for numerous lung illnesses. Langelier et al., (2018) used a metagenome, metatranscriptome, and host transcriptome method to identify omic characteristics in lower airway samples from respiratory tract infection patients. Unterman et al.(2022) found desynchrony of innate and adaptive immunological responses in COVID-19 patients using a single-cell multiomics investigation of T and B cell responses and tocilizumab adaptability. Li et al.(2022) reviewed COVID-19 multiomics integration-based molecular characterizations, which have used transcriptomics, proteomics, genomics, lipidomics, immunomics, and metabolomics to explore virus targets and develop therapeutic solutions using systemic biological techniques.

7. Clinical Diagnosis Methods for LRTIS:

Molecular probes have the advantages of faster speed, specificity, and sensitivity over traditional culture means. Knowing the type of target nucleic acid (DNA,RNA)is useful from the standpoint of probe technology. Molecular probes and gene amplification are valuable tools that have become standard diagnostic procedures. Non-specific markers of airway inflammation are being studied in order to detect inflammation of the lower respiratory tract early, particularly in patients with chronic lung diseases that are at risk of infection(Ross et al.,2019).

In spite of several demonstrations, these sensor technologies encounter a number of challenges, including poorer sensitivity, time-consuming processes, and the requirement of training to manage the measurements. To address these challenges, researchers have developed several biosensors and biosensing techniques to detect respiratory infections in their early stages (Jiang et al., 2020, Qureshi and Niazi,2020, Ribeiro et al.,2020).The development of biosensors meet the contemporary demands, such as label-free, accurate detection, faster diagnosis, and reduced cost, and they complement existing detection systems. Additionally, nanomaterials have been used by researchers to enhance the analytical performance of biosensors. .

Peptide procalcitonin is extensively used as a biomarker in the identification of pneumonia. Procalcitonin levels in the serum are elevated during bacterial infections but not viral infections, according to research of Kamat et al.,(2020).This differentiation leads to distinctive common pneumonia from viral pathogens. Researchers developed a colorimetric assay using gold nanoparticles in order to identify the *Mycoplasma pneumoniae* target gene. Following duplication of extracted DNA with target DNA, GNPs were initiated. Duplex formation proffers the presence of the target, rendering it incapable of affixing to the GNPs. As a result of GNP aggregation, the solution turns purple when exposed to elevated salt concentrations. Captured DNA can bind to the surface of GNPs in the absence of a target, thereby inhibiting aggregation in the presence of elevated salt

concentrations. This colorimetric assay helps in the diagnosis of respiratory infections and the identification of *M. pneumoniae* (Qin, et al., 2023).

Direct antigen detection methods for a variety of bacterial infections, including *S. pneumoniae* and other streptococci, are available and employed. ELISPOT (enzyme-linked immunospot) techniques for detecting antigen-specific T-cells are also being developed in research labs. *M. tuberculosis* detection technique seems to be more sensitive than the tuberculin skin test (Lalvani et al., 2001). These assays are measurable and may be automated for epidemiological screening. The determination of the different frequency of repetitive sequences at different places within the chromosomal DNA allows a 'fingerprint' to be established. After digesting chromosomal DNA, it is hybridized to radioactive or chemiluminescent probes. *Mycobacterium tuberculosis* IS6110 sequence is present in low copy number and has been adopted for defining tuberculosis epidemiology as well as to identify the organism (Myint, 2002).

To find the viruses and bacteria, the clustered regularly interspaced short palindromic repeats (CRISPR) method was implemented. Identification of *M. tuberculosis*, *L. monocytogenes*, *E. coli*, and *S. aureus* was accomplished using this system. In the use of isothermal nucleic acid amplification and polymerase chain reaction techniques, including SDA, RCA, LAMP, and EXPAR, a higher sensitivity has been reached with CRISPR (Ma et al., 2021). Lakshmi Priya et al. (2013) developed an aptamer designed for influenza B Tokyo intact virus to accomplish fluorescent-based surface plasmon resonance spectroscopy-based identification of the selected aptamers. Aptamers, which can function similarly to antibodies and can be replaced for antibodies in a wide range of applications, are frequently referred to as "artificial antibodies." The sensing substrate was a silica surface that had been modified with influenza virus via an amine-aldehyde linker; aptamer was subsequently applied to the surface. Using cy5 fluorescence, the interaction between aptamer and influenza virus was identified. The authors discovered that the aptamers exhibited a higher degree of affinity, and the aptamer detection limit for influenza was 8 ng/mL.

Early detection of COVID-19 is crucial for preventing the virus's transmission and protecting the lives of patients. Concurrently, novel virus strains arise, making the development of a suitable COVID-19 diagnostic sensor challenging. Most sensors rely on polymerase chain reaction (PCR)-based testing in this critical situation; however, this method is time-consuming and costly. Currently, scientists are espoused in the development of a COVID-19 biosensor that is both highly sensitive and capable of detecting a number of COVID-19 biomarkers. Ramanathan et al. (2022) find out the surface spike protein of coronavirus by using electrochemical impedance spectroscopy based on antibodies. The electrode was coated with the anti-spike protein antibody via the GOPTS chemical linker. GOPTS was used to modify the electrode in order to affix the anti-spike protein antibody. Concurrently, spike protein was immobilized on the diamond surface via the CDI linker. As the modified diamond-spike protein interacted with the antibody-modified surface, impedance spectroscopy was utilized to track particular responses. Researchers devised a smartphone-based portable system in a further investigation to efficiently detect pathogens, including bacteria and viruses, by utilizing colorimetric loop-mediated isothermal amplification (LAMP). The viral samples are purified utilizing particular reagents that have been pre-conjugated with magnetic beads. Eventually, the virus is lysed, isothermal nucleic acid amplification is performed, and the outcome is quantified using a colorimetric assay. The viral antigen exhibited a limit of detection of 3.2×10^{-3} units per reaction, a value that facilitates the identification of the virus during its nascent phases (Ma et al., 2021).

8. Global Programs and Actions Focused on Preventing LRTIS:

As a result of the fact that the factors that cause pneumonia and diarrhea are identical, it has been established that strategies for preventing and controlling both diseases have to be coordinated accordingly. In light of this, the Integrated Global Action Plan for Pneumonia and Diarrhea was put into effect in the year 2013, with the objective of implementing steps to pediatric deaths that potentially have been prevented due to pneumonia and diarrhea by the year 2025. In spite of the global policies that have been implemented to eliminate deaths caused by pneumonia, more than two-thirds of the global burden of mortality caused by pneumonia and diarrhoea occurs in only fifteen nations. According to Varghese and Muhammad (2023), the amount of deaths that occurred in children under the age of five in India as a result of pneumonia was 6.3 per 1000 live births in the year 2016.

In Honduras, ARI management is part of the National Integrated Community Child Care Program. In more than 1,800 communities, community workers track children's growth, educate them about health, and treat pneumonia and diarrhoea. The Bangladesh Rural Advancement Committee and the government started a program to control ARI in 10 sub-districts. There is a government program in The Gambia for dealing with pneumonia in communities. Community health workers from a nongovernmental group address pneumonia and other childhood illnesses in Kenya's Siaya district (WHO, 2004). A research in India in 2012 found that providing zinc supplements to newborns from 7 days to 120 days old who were likely to have a serious bacterial disease lowered their risk of mortality. These results suggest that zinc supplements may help lower the risk of death from LRTIs (Bhatnagar et al., 2012).

The GAPPD aims to decrease U5MR (under five mortality rate) caused by pneumonia to less than three per 1000 live births and severe pneumonia by 75% by 2025 (Quach et al., 2022). The GAPPD established pneumonia-specific coverage targets for 2025: 90% full-dose vaccination coverage by age 12 months (Measles, Hib3, PCV3, DTP3); 90% timely case management; and 50% exclusive breastfeeding coverage during the first six months. Reducing indoor air pollution and eliminating pediatric HIV transmission were other goals (WHO, 2023).

9. Initiative and Interventions for LRTIS prevention in India:

National Immunization Initiative Mission:

Globally, vaccines have greatly reduced vaccine-preventable disease (VPD) mortality and morbidity. The Ministry of Health and Family Welfare has launched the Pneumococcal Conjugate Vaccine (PCV) nationally under the Universal Immunization Program (UIP). PCV was launched in May 2017 to mitigate pneumococcal pneumonia-related infant mortality and morbidity. It has been implemented in Bihar, Himachal Pradesh, Madhya Pradesh, UP and Rajasthan. Under the Universal Immunization Programme (UIP), India launched Mission Indradhanush in 2014 and Intensified Mission Indradhanush in 2017 to enhance immunization coverage (Bhadoria et al., 2019).

The four states with the highest child mortality rate (UP, MP, Bihar, and Rajasthan) have come up with the Integrated Action Plan for Pneumonia and Diarrhea (IAPPD) to deal with the two main causes of child death, pneumonia and diarrhea. Integrated Management of Neonatal and Childhood Illnesses (IMNCI) is being pushed for early identification and case management of common childhood illnesses, with a focus on pneumonia, diarrhea, and malnutrition. This is for both community and facility-based care of children. Early identification and prompt referral of children with prevalent diseases like diarrhea and pneumonia by ASHAs-ASHAs are being trained to help them identify common childhood illnesses like diarrhea and pneumonia, provide first-level care, and refer infants to an appropriate health facility.

National Rural Health Mission:

Based on the National Family Health Survey -4 (2015-16), it was shown that the percentage of children under the age of five who suffer from acute respiratory infections (ARI), which includes pneumonia, is 2.9% in rural areas, whereas the percentage in urban areas is 2.3%. SAANS (Social Awareness and Actions to Neutralize Pneumonia Successfully) Initiative was established by the Ministry of Health and Family Welfare's Reproductive, Maternal, Newborn, Child, and Adolescent Health and Nutrition (RMNCHA+N) program of the National Health Mission with the goal of reducing the number of deaths that occur as a result of pneumonia in children in both urban and rural areas.

The NRHM brought about eloquent changes in India's health care system. The Mission facilitated India in scoring the fourth and fifth Millennium Development Goals. Starting in 2019, the SAANS initiative has the goal of lowering the morbidity and mortality rates related with pneumonia in children.

10. Conclusion and Future Remarks:

Lower respiratory tract infections (LRTIs) the most widespread infection and also sixth-leading cause of demise in globe. Pneumonia, bronchitis, bronchiolitis, and other lung alveolar and lung infections are classified as LRTIs. The primary causes of respiratory tract infections (LRTIs), which includes a variety of ailments affecting the lungs' airways and alveoli, including pneumonia, bronchitis, and bronchiolitis, include bacteria, viruses, fungi, and parasites. It has been proven that COVID-19 and other chronic lung diseases are play an immense burden on both individuals and the healthcare system.

The diagnostic process for clinical infections has seen significant change in the recent several years, particularly with the quick advancement of molecular diagnostic techniques. Complications from lower respiratory tract infections can impact the sinuses, lungs, larynx, and airways in addition to causing breathing problems. Timely identification of the infection speeds up the healing process and evade the necessity for admission to the intensive care unit (ICU). Several methods have been devised to identify respiratory infections in their early stages. In recent years, there have been significant modifications to the diagnostic process for clinical infections due to the swift advancement of molecular diagnostic technologies. Due of the pandemic mitigation measures, countries worldwide shifted their focus to community spread reduction, vaccination, and COVID-19 treatment. worldwide action and initiatives Lower respiratory tract infections have decreased thanks to national intervention. While almost all nations have implemented numerous immunization programs, including those for pneumococcal and Hib vaccines, high-burden nations like Nigeria, Chad, and Somalia have not done so because of their funding constraints.

A serious risk to respiratory health is airborne diseases. Accurately identifying those who are sick or not within the same setting can help develop infection control strategies that uphold individual liberty, social responsibility, equity, and nondiscrimination. Reducing pollution may decrease the risk of evolving lung cancer, emphysema, and asthma, among other serious illnesses.

Physical workout and education combined with respiratory rehabilitation has been exhibited to improve health-related quality of life, lessen tiredness and dyspnea, and cut down on hospitalizations in patients with chronic lung disease. The COVID-19 pandemic has led to the mainstreaming of telehealth, which was previously ignored. The scope of technology equipped the rural and urban patient and clinician education is growing because of PCs, smartphones, tablets, and mobile apps.

Airborne infections pose a serious risk to the respiratory system's health. In addition to potentially lowering the incidence of other serious illnesses including lung cancer, emphysema, and pneumonia, pollution reduction may also minimize the burden of asthma. There is clear proof that pulmonary rehabilitation, which combines education and exercise for patients with chronic lung illness, improves health-related quality of life and lessens exhaustion and dyspnea symptoms. and cutting down on hospital stays.

11. References:

1. Alaib H, Algariri N, Ahmed H, (2023) Frequency and Seasonal Variations of Viruses Causing Respiratory Tract Infections in Children Pre- and Post-COVID-19 Pandemic in Riyadh (2017-2022). *Cureus* 15(1): e33467. doi:10.7759/cureus.33467
2. Arun, A., Gupta, P., Sachan, B., and Srivastava, J. P., (2014) Study on prevalence of acute respiratory tract infections (ARI) in under five children in Lucknow district. *Nat J of Med Research*, 4(4), 298-302
3. Bhadoria AS, Mishra S, Singh M, Kishore S. (2019) National Immunization Programme - Mission Indradhanush Programme: Newer Approaches and Interventions. *Indian J Pediatr*. 86(7):633-638. doi: 10.1007/s12098-019-02880-0. Epub 2019 Mar 20. PMID: 30895443.
4. Bhatnagar S, Wadhwa N, Aneja S, Lodha R, Kabra SK, Natchu UC, (2012) Zinc as adjunct treatment in infants aged between 7 and 120 days with probable serious bacterial infection: a randomised, double-blind, placebo-controlled trial. *Lancet*.; 379(9831):2072-8.
5. Braun H, Buzina W, Freudenschuss K, Beham A, Stammberger H. (2003) 'Eosinophilic fungal rhinosinusitis': a common disorder in Europe? *Laryngoscope*.; 113(2):264-9. doi: 10.1097/00005537-200302000-00013. PMID: 12567080.
6. Burbank AJ. (2023). Risk Factors for Respiratory Viral Infections: A Spotlight on Climate Change and Air Pollution. *J Asthma Allergy*. 25; 16:183-194. doi: 10.2147/JAA.S364845. PMID: 36721739; PMCID: PMC9884560.
7. Carroll KC (2022). Laboratory diagnosis of lower respiratory tract infections: controversy and conundrums. *J Clin Microbiol*. 40 (9):3115-20. doi: 10.1128/JCM.40.9.3115-3120.2002.

8. Chen, Yingxi, Emlyn Williams, and Martyn Kirk (2014). "Risk factors for acute respiratory infection in the Australian community." *PloS one* 9.7: 101-440.
9. Choube, A., Kumar, B., Mahmood, S. E., and Srivastava, A., (2014), Potential risk factors contributing to acute respiratory infections in under five age group children. *Int J Med Sci Public Health*, 3(11), 1385-8.
10. Cope, E. K. (2018). Host-Microbe Interactions in Airway Disease: toward Disease Mechanisms and Novel Therapeutic Strategies. *Msystems*, 3(2), 10-1128.
11. Cunha, B. A. (2001). Pneumonias in the compromised host. *Infectious disease clinics of North America*, 15(2), 591-612.
12. Dapat, C., & Oshitani, H. (2016). Novel insights into human respiratory syncytial virus-host factor interactions through integrated proteomics and transcriptomics analysis. *Expert review of anti-infective therapy*, 14(3), 285-297.
13. Dickson RP, Erb-Downward JR, Martinez FJ, Huffnagle GB.(2016). The Microbiome and the Respiratory Tract. *Annu Rev Physiol*; 78:481-504. doi: 10.1146/annurev-physiol-021115-105238.
14. Feddema JJ, van der Geest AM, Claassen E, van de Burgwal LHM(2021).. Lower Respiratory Tract Infection Trends in East and South-East Asia: In the Light of Economic and Health Care Development. *Global Pediatric Health*. 2021;8. doi:10.1177/2333794X21989530
15. Fiehn O. Combining genomics, metabolome analysis, and biochemical modelling to understand metabolic networks. *Comp Funct Genomics*. 2001;2(3):155-68.
16. Fujiogi, M., Camargo Jr, C. A., Raita, Y., Bochkov, Y. A., Gern, J. E., Mansbach, J. M., & Hasegawa, K. (2020). Respiratory viruses are associated with serum metabolome among infants hospitalized for bronchiolitis: a multicenter study. *Pediatric Allergy and Immunology*, 31(7), 755-766.
17. Fujiogi, M., Camargo Jr, C. A., Raita, Y., Zhu, Z., Celedón, J. C., Mansbach, J. M. Hasegawa, K. (2021). Integrated associations of nasopharyngeal and serum metabolome with bronchiolitis severity and asthma: a multicenter prospective cohort study. *Pediatric Allergy and Immunology*, 32(5), 905-916.
18. Gasink, L. B., & Blumberg, E. A. (2005). Bacterial and mycobacterial pneumonia in transplant recipients. *Clinics in chest medicine*, 26(4), 647-659.
19. Goel, K., Ahmad, S., Agarwal, G., Goel, P., and Kumar, V. (2012). A cross sectional study on prevalence of acute respiratory infections (ARI) in under-five children of Meerut district. *India. J Community Med Health Educ*, 2(9), 1-4
20. Ho T, Shahzad A, Jones A, Examining the effect of the COVID-19 pandemic on community virus prevalence and healthcare utilisation reveals that peaks in asthma, COPD and respiratory tract infection occur with the re-emergence of rhino/enterovirus *Thorax* 2023. doi: 10.1136/thorax-2022-219957.
21. Jiang, Z., Feng, B., Xu, J., Qing, T., Zhang, P., & Qing, Z. (2020). Graphene biosensors for bacterial and viral pathogens. *Biosensors and Bioelectronics*, 166, 112471.
22. Kaddurah-Daouk R, Kristal BS, Weinsilboum RM. Metabolomics: a global biochemical approach to drug response and disease. *Annu Rev Pharmacol Toxicol*. 2008; 48:653-83.
23. Kamat, I. S., Ramachandran, V., Eswaran, H., Guffey, D., & Musher, D. M. (2020). Procalcitonin to distinguish viral from bacterial pneumonia: a systematic review and meta-analysis. *Clinical Infectious Diseases*, 70(3), 538-542.
24. König S.(2011) Urine molecular profiling distinguishes health and disease: new methods in diagnostics? *Focus on UPLC-MS. Expert Rev Mol Diagn*. 2011; 11(4):383-91.
25. Kumar, S. G., Majumdar, A., Kumar, V., Naik, B. N., Selvaraj, K., and Balajee, K., (2015), Prevalence of acute respiratory infection among under-five children in urban and rural areas of puducherry, India. *Journal of natural science, biology, and medicine*, 6(1), 3.
26. Laiakis, E. C., Morris, G. a J., Fornace, A. J. & Howie, S. R. C.(2010) Metabolomic analysis in severe childhood pneumonia in The Gambia, West Africa: Findings from a pilot study. *PLoS One* 5, 1-9 .
27. LakshmiPriya, T., Fujimaki, M., Gopinath, S. C., & Awazu, K. (2013). Generation of anti-influenza aptamers using the systematic evolution of ligands by exponential enrichment for sensing applications. *Langmuir*, 29(48), 15107-15115.
28. Lalvani, A., Pathan, A. A., Durkan, H., Wilkinson, K. A., Whelan, A., Deeks, J. J., Hill, A. V. (2001). Enhanced contact tracing and spatial tracking of Mycobacterium tuberculosis infection by enumeration of antigen-specific T cells. *The Lancet*, 357(9273), 2017-2021.
29. Langelier, C., Kalantar, K.L., Moazed, F., Wilson, M.R., Crawford, E.D., Deiss, T., Belzer, A., Bolourchi, S., Caldera, S., Fung, M. and Jauregui, A., (2018). Integrating host response and unbiased microbe detection for lower respiratory tract infection diagnosis in critically ill adults. *Proceedings of the National Academy of Sciences*, 115(52), pp.E12353-E12362.
30. Li, C. X., Gao, J., Zhang, Z., Chen, L., Li, X., Zhou, M., & Wheelock, Å. M. (2022). Multiomics integration-based molecular characterizations of COVID-19. *Briefings in Bioinformatics*, 23(1), bbab485.
31. Ma, L., Peng, L., Yin, L., Liu, G., & Man, S. (2021). CRISPR-Cas12a-powered dual-mode biosensor for ultrasensitive and cross-validating detection of pathogenic bacteria. *Acs Sensors*, 6(8), 2920-2927.
32. Mehta, P., Bothiraja, C., Kadam, S., & Pawar, A. (2018). Potential of dry powder inhalers for tuberculosis therapy: facts, fidelity and future. *Artificial cells, nanomedicine, and biotechnology*, 46(sup3), S791-S806.
33. Mehta, S., Shin, H., Burnett, R.(2013)Ambient particulate air pollution and acute lower respiratory infections: a systematic review and implications for estimating the global burden of disease. *Air Qual Atmos Health* 6, 69-83 <https://doi.org/10.1007/s11869-011-0146-3>.
34. Myint S.(2022) Recent advances in the rapid diagnosis of respiratory tract infection. *Br Med Bul*;61(1):97-114. doi: 10.1093/bmb/61.1.97. PMID: 11997301; PMCID: PMC7109875.
35. Nair, H., Simões, E. A., Rudan, I., Gessner, B. D., Azziz-Baumgartner, E., Zhang, J. S. F., & Campbell, H. (2013). Global and regional burden of hospital admissions for severe acute lower respiratory infections in young children in 2010: a systematic analysis. *The Lancet*, 381(9875), 1380-1390.

36. Ponikau JU, Sherris DA, Kern EB, Homburger HA, Frigas E, Gaffey TA, Roberts GD (1999). The diagnosis and incidence of allergic fungal sinusitis. *Mayo Clin Proc.* 74(9):877-84. doi: 10.4065/74.9.877. PMID: 10488788.
37. Qin, D., Gong, Q., Li, X., Gao, Y., Gopinath, S. C., Chen, Y., & Yang, Z. (2023). Identification of *Mycoplasma pneumoniae* by DNA-modified gold nanomaterials in a colorimetric assay. *Biotechnology and applied biochemistry*, 70(2), 553-559.
38. Quach A, Spence H, Nguyen C, Graham SM, von Mollendorf C, Mulholland K, Russell FM(2022). Slow progress towards pneumonia control for children in low-and-middle income countries as measured by pneumonia indicators: A systematic review of the literature. *J Glob Health.* Oct 25;12:10006. doi: 10.7189/jogh.12.10006. PMID: 36282893; PMCID: PMC9595578.
39. Qureshi, A., & Niazi, J. H. (2020). Biosensors for detecting viral and bacterial infections using host biomarkers: a review. *Analyst*, 145(24), 7825-7848.
40. Ramanathan, S., Gopinath, S. C., Hilmi Ismail, Z., & Subramaniam, S. (2022). Nanodiamond conjugated SARS-CoV-2 spike protein: electrochemical impedance immunosensing on a gold microelectrode. *Microchimica Acta*, 189(6), 226.
41. Ribeiro, B. V., Cordeiro, T. A. R., e Freitas, G. R. O., Ferreira, L. F., & Franco, D. L. (2020). Biosensors for the detection of respiratory viruses: a review. *Talanta Open*, 2, 100007.
42. Ross MH, Zick BL, Tsalik EL.(2019) Host-Based Diagnostics for Acute Respiratory Infections. *Clin Ther*; 41(10):1923-1938. doi: 10.1016/j.clinthera.2019.06.007.
43. Rudan I, Nair H, Marušić A, Campbell H.(2013). Reducing mortality from childhood pneumonia and diarrhoea: The leading priority is also the greatest opportunity. *J Glob Health.* 3(1):010101. doi: 10.7189/jogh.03.010101.
44. Safiri S, Mahmoodpoor A, Kolahi AA, Nejadghaderi SA, Sullman MJM, Mansournia MA, Ansarin K, Collins GS, Kaufman JS, Abdollahi M.(2023) Global burden of lower respiratory infections during the last three decades. *Front Public Health* 9;10:1028525. doi: 10.3389/fpubh.2022.1028525.
45. Salvi, S., Kumar, G.A., Dhaliwal, R.S., Paulson, K., Agrawal, A., Koul, P.A., Mahesh, P.A., Nair, S., Singh, V., Aggarwal, A.N. and Christopher, D.J., (2018). The burden of chronic respiratory diseases and their heterogeneity across the states of India: the Global Burden of Disease Study 1990-2016. *The Lancet Global Health*, 6(12), pp.e1363-e1374.
46. Santacrose L, Charitos IA, Ballini A, Inchingolo F, Luperto P, De Nitto E, Topi S.(2020) The Human Respiratory System and its Microbiome at a Glimpse. *Biology (Basel)*. 1;9(10):318. doi: 10.3390/biology9100318.
47. Sharma, D., Kuppusamy, K., and Bhoorasamy, A., (2013), Prevalence of acute respiratory infections (ari) and their determinants in under five children in urban and rural areas of Kancheepuram district, South India. *Annals of Tropical Medicine and Public Health*, 6(5), 513.
48. Shen, B., Yi, X., Sun, Y., Bi, X., Du, J., Zhang, C., Guo, T. (2020). Proteomic and metabolomic characterization of COVID-19 patient sera. *Cell*, 182(1), 59-72.
49. Shukla SD, Swaroop Vanka K, Chavelier A, Shastri MD, Tambuwala MM, Bakshi HA, Pabreja K, Mahmood MQ, O'Toole RF(2020).. Chronic respiratory diseases: An introduction and need for novel drug delivery approaches. *Targeting Chronic Inflammatory Lung Diseases Using Advanced Drug Delivery Systems.*:1-31. doi: 10.1016/B978-0-12-820658-4.00001-7. Epub 2020 Sep 18. PMCID: PMC7499075.
50. Sidhaye, V. K., Nishida, K., & Martinez, F. J. (2018). Precision medicine in COPD: where are we and where do we need to go?. *European respiratory review*, 27(149).
51. Soriano, Joan B., Kendrick, P.J., Paulson, K.R., Gupta, V., Abrams, E.M., Adedoyin, R.A., Adhikari, T.B., Advani, S.M., Agrawal, A., Ahmadian, E. and Alahdab, F. (2020)"Prevalence and attributable health burden of chronic respiratory diseases, 1990-2017: a systematic analysis for the Global Burden of Disease Study 2017." *The Lancet Respiratory Medicine* 8.6 : 585-596.
52. Tenori L, Oakman C, Claudino WM, Bernini P, Cappadona S, Nepi S, (2012)Exploration of serum metabolomic profiles and outcomes in women with metastatic breast cancer: a pilot study. *Mol Oncol.* 2;6(4):437-44.
53. Unterman, A., Sumida, T.S., Nouri, N., Yan, X., Zhao, A.Y., Gasque, V., Schupp, J.C., Asashima, H., Liu, Y., Cosme Jr, C. and Deng, W., (2022). Single-cell multi-omics reveals dyssynchrony of the innate and adaptive immune system in progressive COVID-19. *Nature communications*, 13(1), p.440.
54. Varghese, J.S., Muhammad, T.(2023). Prevalence, potential determinants, and treatment-seeking behavior of acute respiratory infection among children under age five in India: Findings from the National Family Health Survey, 2019-21. *BMC Pulm Med* 23, 195 (2023).<https://doi.org/10.1186/s12890-023-02487-4>
55. Wheelock CE, Goss VM, Balgoma D, Nicholas B, Brandsma J, Skipp PJ,(2013).Application of 'omics technologies to biomarker discovery in inflammatory lung diseases. *Eur Respir J.* 2013;42(3):802-25.
56. WHO (2004) WHO/UNICEF Joint Statement: Management of Pneumonia in Community Settings." WHO/FCH/CAG/04.06. WHO, Geneva.
57. WHO / UNICEF; (2013).Ending preventable child deaths from pneumonia and diarrhoea by 2025. The integrated Global Action Plan for Pneumonia and Diarrhoea (GAPPD).
58. WHO.(2021) Coronavirus Disease (COVID-19) Technical Guidance: Risk Communication and Community Engagement
59. Wildman E, Mickiewicz B, Vogel HJ, Thompson GC. (2023)Metabolomics in pediatric lower respiratory tract infections and sepsis: a literature review. *Pediatr Res.* 93(3):492-502. doi: 10.1038/s41390-022-02162-0.
60. Yin, G. Q., Zeng, H. X., Li, Z. L., Chen, C., Zhong, J. Y., Xiao, M. S. & Cai, S. X. (2021). Differential proteomic analysis of children infected with respiratory syncytial virus. *Brazilian Journal of Medical and Biological Research*, 54
61. Zhang, X., Peng, D., Zhang, X., Wang, X., Chen, N., Zhao, S., & He, Q. (2021). Serum metabolomic profiling reveals an important difference between infants with and without subsequent recurrent wheezing in later childhood after RSV bronchiolitis. *Apmis*, 129(3), 128-137.